

Year 6 Newsletter 21.11.25

Dear Parents/Carers,

We hope you have had a great week. This term's curriculum map (with more information about topics covered) can be found on our website on the 'curriculum' tab, then 'curriculum overview'.

This Week

This week in English, the children have been finishing their letters inspired by Holes. We have also started thinking about how suspense is created in writing in preparation for our next piece of work and exploring the writing techniques that the writer uses. In science lessons we have been classifying animals and plants into different groups. During P.E. children have been using their hockey skills to play games and we have been learning about how data is collected, transmitted and stored in computing.

Next Week

In maths, we will be continuing with work in our maths sets focusing on identified objectives. You could support at home by asking your child about what they are learning in lessons and encourage them to be involved in real-life maths at home such as reading scales, calculating money, talking about time.

In English we will be continuing with Holes and be using what we have learnt about suspense to create our own short pieces of writing. We will also be exploring how writers use dialogue to develop a story.

In science, we will be exploring micro-organisms.

Homework

There will be a grammar focus for English homework next week. As usual, maths homework will be assigned by the teacher of each set and is related to the work that the children are doing. Homework will be handed out on a Monday and returned on a Friday each week.

Please encourage your child to use times tables rockstars regularly to improve their fluency with multiplication.

Reading

Please ensure your child's Reading Record is signed by an adult. Children should be reading every evening for at least 15 minutes and, where possible, to an adult. All books can be changed during the class Library Session.

Extended Project

A reminder that autobiographies are due in soon. We are looking forward to reading them.

Notices and Reminders

There are still quite a few children who are not bringing a black ink pen to school. This is really important in year 6 as they prepare their writing work for assessment. An erasable pen is ideal as it allows children to correct errors and maintain a high level of presentation.

Trip to the Science Museum

Pine (Miss Jackman) - pine@whiteheath-jun.hillingdon.sch.uk

Poplar (Miss Lawrence) - poplar@whiteheath-jun.hillingdon.sch.uk

Juniper (Mr Goodchild) - juniper@whiteheath-jun.hillingdon.sch.uk



Year 6 Newsletter 21.11.25

We are visiting the Science Museum next Friday. We will be leaving at school as soon as possible after 8:50am, so please make sure all children are in school on time. They should be in full school uniform with suitable coats for the weather. They will also need a packed lunch. We will return to school by 3:45pm (please note the later pick-up time).

Christmas Fair

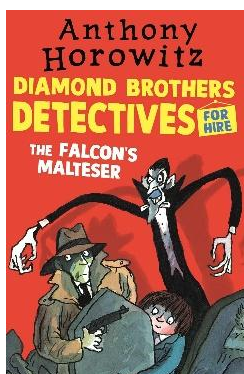
We have discussed the Christmas Fayre with the children today and they have come up with lots of brilliant ideas. Thank you for all of your support with this. The fayre is on Thursday 4th December and, if possible, we ask children to stay after school to continue running their stalls for parents.

Toys

If you have any unwanted small toy cars or vehicles at home, please would you be willing to donate them to school. We are looking for vehicles of different shapes, colours and sizes. Thank you.

Book Recommendation

This week's book recommendation is 'The Falcon's Malteser' by Anthony Horowitz.



This is a fabulously funny story about Tim Diamond, the world's worst detective. When a visitor comes into the office and leaves a package, Tim is faced with his toughest case yet. The office is ransacked and the package is found to contain simply a box of Maltesers. Who was the visitor ... and why was he murdered shortly after his visit? Fortunately, Tim's younger brother, Nick, is on hand to help solve the mystery.

Upcoming dates

| | |
|-------------------------------------|---|
| Monday 24 th November | Individual photographs |
| Friday 28 th November | Year 6 visit to the Science Museum |
| Thursday 4 th December | PTA Christmas Fayre |
| Wednesday 10 th December | SEND & Pastoral meeting for parents/carers 2:45pm |
| Thursday 11 th December | Year 6 Height and Weight Check - am |
| Friday 12 th December | Christmas lunch, Christmas Service and Christmas Jumper Day |
| Tuesday 16 th December | Autumn term report cards out to parents/carers |
| Thursday 18 th December | Christmas Parties |
| Friday 19 th December | School term ends at 12:30pm |

Pine (Miss Jackman) - pine@whiteheath-jun.hillingdon.sch.uk

Poplar (Miss Lawrence) - poplar@whiteheath-jun.hillingdon.sch.uk

Juniper (Mr Goodchild) - juniper@whiteheath-jun.hillingdon.sch.uk



Year 6 Newsletter 21.11.25

Reminders/deadlines/ key dates for next week

| Monday | Tuesday | Wednesday | Thursday | Friday |
|-------------------|---------|--|--|---|
| Juniper - Library | | Poplar - Library Poplar - PE Pine - PE Juniper - PE | Poplar - Library Poplar - PE Pine - PE Juniper - PE | Pine - Library Autobiographies due in |

Have a lovely weekend,

Miss Lawrence, Miss Jackman, Mr Goodchild

Pine (Miss Jackman) - pine@whiteheath-jun.hillingdon.sch.uk

Poplar (Miss Lawrence) - poplar@whiteheath-jun.hillingdon.sch.uk

Juniper (Mr Goodchild) - juniper@whiteheath-jun.hillingdon.sch.uk

