



WHITEHEATH JUNIOR SCHOOL

Opportunity, Confidence & Growth

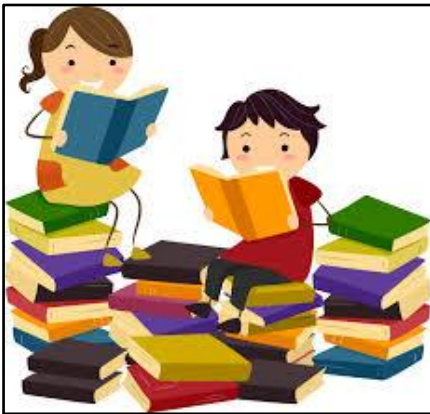
Whole School Newsletter

Newsletter No: 21

Friday 27th February, 2026.

Welcome to our whole school newsletter. Our aim is to keep you informed of achievements, successes and general information regarding Whiteheath Junior School. These newsletters will be sent to you at the end of the week. You can also find this newsletter on the home page of the school **website** along with our '**year group pages**' (under the 'children' section on the website). Please check your emails regularly as this is our main form of communication with you.

CALLING OUT FOR READING HELP



We are in need of adult support to hear our children read and are putting out a further call for help.

If you can only spare an hour once a week, this would help! If you can spare an hour after drop off or an hour before school drop off, we would be interested in your support. Please email the office if you think you can offer us some of your time.

Many, many thanks.

WHOLE SCHOOL TIMES TABLE CHALLENGE

We are pleased to announce the start of a Whole School Times Tables Challenge! Starting next week, the children will have a times tables quiz each week for 3 weeks. Scores will be collated and there will be prizes for the children who make the most progress from their starting point.

We will be doing lots of additional practice in school; however, your children will benefit greatly from extra practice at home as well.

Please encourage them to use **Times Tables Rock Stars** and any other apps or websites you know to help them practise their times tables.

We wish all the children the very best of luck! Mr Goodchild, Maths Lead.



Sports News

On Wednesday afternoon our boys A team played against Breakspear in a football fixture. It was a glorious afternoon and the boys started the match well, keeping the ball and creating many chances.

James managed to produce some excellent saves and the score remained 0-0 at half time.

The boys started strongly in the second half and dominated the game. The momentum was on Whiteheath's side and the boys took their opportunity to put a goal past the onrushing goalkeeper to make it 1-0 by the final whistle. An outstanding game from everyone involved. Well done to all! Mr Newing.



Reminders

BIG WALK AND WHEEL WEEK



We're excited to be taking part in the **Big Walk and Wheel** from **16th–27th March**! This national event encourages pupils to travel to school in active ways such as walking, wheeling, scooting or cycling. It's a fun opportunity to build healthy habits, reduce traffic around the school and help the environment. Each day, classes will record how many pupils travel actively, with opportunities for friendly competition and celebration. We'd love your support in helping your child take part wherever possible — every active journey counts!

PARENT/CARER CURRICULUM WORKSHOPS

We have several workshops this year. The date/time of the remaining workshops are:

- **Spring 2 - Oracy – TUESDAY 10th MARCH (DATE CHANGED) 9:00 – 10:00am**
- **Summer 1 – Behaviour Policy and Behaviour Curriculum– 16th April - 2pm**
- **Summer 1 - Spelling – 21st April 9am 10am**
- **Summer 2 – Computing/Online Safety - Wednesday 10th June 9:00 - 10:00am**

All parents/carers are welcome to attend. booking details will be sent out for each workshop in due course.

SEND & PASTORAL SESSIONS FOR PARENTS/CARERS

- **Wednesday 25th March at 2.45pm**
 - An opportunity to raise your questions related to SEND and Pastoral needs/processes.

Please email your attendance and send through questions you would like to raise ahead of the meetings - sendco@whiteheath-jun.hillingdon.sch.uk



IMPORTANT INFORMATION

SCHOOL TRAVEL AND ROAD SAFETY

School Drop-Off and Pick-Up Safety

We are continuing to receive an increased number of complaints regarding traffic issues at school pick up and drop off times.

The common factors are:

- poor driver behaviour
- lack of consideration for other road users and pedestrians
- illegal/irresponsible parking

Everyone in the community—children, parents and local residents—deserves a safe environment during school pick-up and drop-off times. When individuals take personal responsibility for their behaviour around the school gates, it helps create a safer, more respectful and secure space for all.

Finding a parking space, navigating busy traffic, and maneuvering around pedestrians can be stressful - and stress increases the risk of collisions. Even small changes can make a big difference. If driving is essential, consider parking a little further away from the school and walking the rest of the journey. This helps ease congestion and creates a safer environment for the entire school community. You may also find that, more often than not, this approach is quicker than trying to manage all the challenges right outside the school gates.

IMPORTANT INFORMATION

SCHOOL TRAVEL AND ROAD SAFETY



Pavement parking and double yellow lines

Driving along pavements and obstructing the pavement is against the road traffic law. Parking on the pavement obstructs the only safe space that pedestrians can walk. Park with all four wheels on the road. If there is insufficient space on the road to park then you must move until you find an appropriate space. Double yellow lines are put along the carriageway to stop vehicles obstructing the road. Parking on the double yellow lines obstructs the flow of traffic and causes frustrations for other road users



White zig zags

It is against the road traffic law to stop on the white zig zag markings even for a second. Stopping here carries an immediate three points on your licence and a £100 fine. These markings are found at controlled crossing places to ensure clear unobstructed view of the crossing for the safety of pedestrians.

Dangerous manoeuvres

Carrying out three point turns and reversing into spaces where children are trying to cross the road puts everyone in danger and creates frustrations for other road users.



IMPORTANT INFORMATION

SCHOOL TRAVEL AND ROAD SAFETY



How to create a safe environment for pick up and drop off at school

Road traffic laws are not optional they are **legal requirements** to keep all road users safe.

Drivers

School Keep Clear markings

DO NOT STOP on the yellow zig zags, not even for one second. The markings are placed outside school entrances to keep a clear space for pedestrians to cross the road without obstruction.



Letting children out of the car

Do not let children out of the car onto the carriageway. This is extremely dangerous. Always ensure children alight onto the pavement and in a suitable space that does not block pavements, driveways or contravene the road traffic laws.



IMPORTANT INFORMATION

SCHOOL TRAVEL AND ROAD SAFETY



Pedestrians

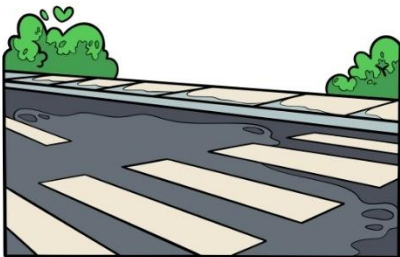
Road Safety Skills



Using the basic Green Cross Code every time you cross the road and showing your child how to look for a safe place with good observations will keep you and your child safe. Being distracted by mobile phones or choosing unsafe places to cross the road puts yourself and your child in danger. It also teaches your child unsafe practices

Safer Crossing Points

Teaching your child where and how to cross the road is essential for their safety. Use crossing facilities where possible; zebra crossing, refuge islands, traffic light controlled crossings. Where no crossing point is available find a spot where you have an unobstructed view along the road and stay patient until there is a clear gap in the traffic before stepping onto the road. The School Keep Clear markings are in place to provide a clear space to cross into school.



By complying to the road traffic laws and the highway code, a safer, calmer environment is created for everyone.



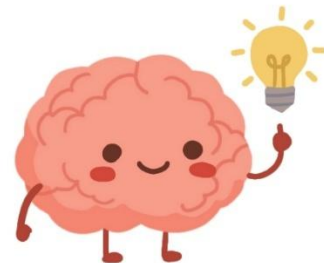
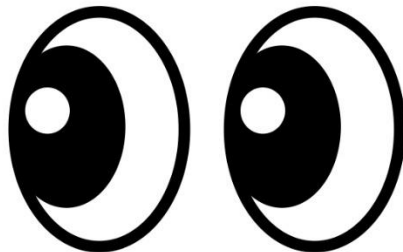
IMPORTANT INFORMATION

SCHOOL TRAVEL AND ROAD SAFETY



Green Cross Code

- Stop: when you approach a crossing, **STOP** before you come to the edge of the pavement
- Look: **LOOK** all around for traffic, as traffic can come from any direction
- Listen: **LISTEN** for vehicles too. You may be able to hear them before you see them
- Think: is there enough time for you to cross the road safely, **THINK** before you do?



For more information on road safety and how to help educate your child, please visit the THINK website via the link below, where you can find further resources and interactive games

Click here → [Tales of the road](#)

WHITEHEATH KINDNESS AWARD



This award is given to one child from each class on a regular basis to acknowledge their acts of kindness.

The celebrated children will have their photos displayed on our Whiteheath Wall of Kindness.

Here are the today's winners:

Oak - Aylin, Willow - Muhammad, Ash - Joseph, Maple - Kush, Elm - Anushka, Beech - Freddie and Leon, Birch - Callista, Yew - Lucius, Poplar - Chloe, Pine - Harry, Juniper - Ruby.



Merit Assembly

Class of the Week – Elm and Pine

Class Merit Awards

Year 3	Year 4	Year 5	Year 6
Anelise, Layla, Frankie	Albert, Sophia, Caleb	Eva, Asha	Bradley, Emily, Daniel

House Points

Hampton	Windsor	London	Westminster
40	20	20	30

Payment/deadline Dates

OUTSTANDING PAYMENTS DUE

Payment
Year 6 alternative week
Year 5 alternative week
D & T resources for the year
Yr 6 SATs books
Yr 5 Mosque trip
Year 6 Journey Outreach
Year 6 Art Canvas
Yr 6 Battle of Britain Bunker trip



UPCOMING PAYMENTS

Payment	Date due
Yr 4 Ark Synagogue trip	27 th February
World Book Day	6 th March
Comic Relief Day	20 th March

Spring Term Dates

Monday 23 rd February	Children return
Friday 27 th February	Year 6 Journey Outreach workshop
Friday 27 th February	Yr 5/6 Basketball Competition (rescheduled)
Thursday 5 th March	Year 5 Mosque visit
Thursday 5 th March	Year 6 Battle of Britain Bunker trip (2 classes)
Friday 6 th March	World Book Day
Monday 9th March	Year 5 visit to Haydon School
Monday 9 th March	Year 6 Battle of Britain Bunker trip (1 class)
Tuesday 10th March	Oracy workshop for parents/carers
Thursday 12 th March	Yr 3/4 Netball Festival
Tuesday 17 th March	Yr 3 Church visit
Thursday 19 th March	Yr 5/6 Development Netball Festival
Friday 20 th March	Comic Relief Day
Monday 23 rd March	Online Maths Parents Meetings – Yr 3
Tuesday 24 th March	Online Maths Parents Meetings – Yr 6
Tuesday 24 th March	Year 4 Synagogue visit
Tuesday 24 th March	Year 5/6 District netball competition
Wednesday 25 th March	Year 5/6 b team netball competition
Wednesday 25 th March	Online Maths Parents Meetings – Yr 5
Wednesday 25 th March	SEND/Pastoral session for parents/carers
Thursday 26 th March	Online Maths Parents Meetings – Yr 4
Thursday 26 th March	Year 6 Maths Challenge
Thursday 26 th March	End of term report cards out to parents/carers
Friday 27 th March	School breaks up for Easter at 12:30pm

Weekly Attendance

Class	% Attendance W/C – 23 rd Feb 2026	% Attendance 03.09.25 – 27.02.26	Year Group Attendance % 03.09.25 – 27.02.26
Ash	92.9	95.2	
Oak	95.8	96.9	
Willow	94.9	94.7	
Year 3	-	-	95.6
Beech	99.1	96.3	
Elm	92.6	94.5	
Maple	97.1	96.1	
Year 4	-	-	95.7
Birch	94.2	95.3	



Yew	97.3	94.8	
Year 5	-	-	95.1
Juniper	98.5	96.5	
Pine	96.7	96.3	
Poplar	97.7	96.2	
Year 6	-	-	96.3
Totals	96.2	95.7	95.7

Contacting us

Contacting class teachers	Willow	Miss Atkinson	willow@whiteheath-jun.hillingdon.sch.uk
	Ash	Mrs Garland/ Mrs Robert	ash@whiteheath-jun.hillingdon.sch.uk
	Oak	Miss Malone	oak@whiteheath-jun.hillingdon.sch.uk
	Maple	Mrs Mendez	maple@whiteheath-jun.hillingdon.sch.uk
	Beech	Miss Cook	beech@whiteheath-jun.hillingdon.sch.uk
	Elm	Mr Lewington	elm@whiteheath-jun.hillingdon.sch.uk
	Yew	Ms Prioli	yew@whiteheath-jun.hillingdon.sch.uk
	Birch	Miss Bryant	birch@whiteheath-jun.hillingdon.sch.uk
	Poplar	Miss Lawrence	poplar@whiteheath-jun.hillingdon.sch.uk
	Pine	Miss Jackman	pine@whiteheath-jun.hillingdon.sch.uk
	Juniper	Mr Goodchild	juniper@whiteheath-jun.hillingdon.sch.uk
Years 5 & 6 maths sets	Miss Wells	maths56@whiteheath-jun.hillingdon.sch.uk	
General enquiries	office@whiteheath-jun.hillingdon.sch.uk		
Welfare/reporting your child's absence	welfare@whiteheath-jun.hillingdon.sch.uk		
Safeguarding concerns - dsl@whiteheath-jun.hillingdon.sch.uk			
Whiteheath Junior School is a safe space for any child or adult to come to talk about issues affecting them. Ask the office to speak to a Designated Safeguarding Lead, (Mrs Ventin or Ms Kenny), or the Deputy Designated Safeguarding Lead (Miss Wells). Alternatively, you can email the address above dsl@whiteheath-jun.hillingdon.sch.uk - this is a confidential email address only read by the safeguarding leads.			
If you are concerned a child may be at risk, you can also contact the Stronger Families Hub on 01895 556006 (available all year round).			

Extra-curricular Clubs

We are very fortunate in being able to offer the children a wide variety of before, lunchtime and after school clubs. To see the full schedule, and for details of how to sign up for clubs, please visit: <https://www.whiteheath-jun.hillingdon.sch.uk/extra-curricular-clubs/>

Online Safety

Each week we are going to include a guide in this newsletter, covering different aspects of online safety, to help ensure children and young people are supported and protected online. We aim to reach and engage our entire school community, fostering a collaborative approach to promoting online safety and digital citizenship.



What Parents & Educators Need to Know about ADULT ANIMATED CONTENT

WHAT ARE THE RISKS?

Bright, bold, and widely shared, adult animated content is more popular than ever, but not always what it seems. These videos, which may appear cartoonish and harmless, often contain strong language, explicit themes, graphic violence, or dark humour. Many are accessible through platforms like YouTube, TikTok or streaming services, where filters may not catch them in time.

MISLEADING VISUAL STYLE

Many adult animations mimic the colourful, exaggerated look of children's cartoons. This can easily mislead not just children, but also adults, into thinking they're suitable for younger viewers. Without watching the content fully, parents or educators might approve a show or video that contains explicit jokes, graphic imagery, or highly inappropriate language, all disguised beneath a playful and fun visual style.

EXPOSURE TO HARMFUL THEMES

A number of adult animated shows and online videos explore mature or disturbing themes, such as addiction, trauma, abuse, self-harm, or violence, and often do so in a stylised or humorous way. Younger viewers may not have the emotional maturity to process this content, leading to confusion, distress, or the normalisation of very serious issues that should be discussed in a supportive context.

RISK OF DISTRESS AND FEAR

Some adult animations, especially horror-based content or 'creepypasta' style stories, include disturbing imagery, unsettling music, and sudden scares. These videos sometimes feature distorted versions of well-known children's characters, such as Sonic the Hedgehog or Peppa Pig. In frightening or violent scenarios, children can be negatively affected if they come across this unexpectedly, leading to sleep disturbances, anxiety, or long-lasting fears, especially if children have existing worries or sensitive personalities.

INFLUENCE OF EDGY HUMOUR

Dark, edgy humour is common in adult animation and often includes jokes about topics like sexism, racism, mental illness, or abuse. When children hear these jokes, they may repeat them without fully understanding their meaning. This can lead to inappropriate behaviour in school or online spaces, and in some cases, it can reinforce harmful stereotypes or desensitise children to real-world injustice and discrimination.

ALGORITHMIC RECOMMENDATIONS

Video platforms are designed to keep users watching by suggesting similar content. If a child watches one mature animation, they may quickly be shown more, including even darker or more extreme videos. These recommendations are based on viewing patterns, not age-appropriateness. Without strict settings in place, this can lead to a rapid spiral into unsuitable, upsetting, or even harmful content online.

DESENSITISATION TO VIOLENCE

Stylised violence in animation is often exaggerated and constant. Repeated exposure to it can reduce a child's emotional response to harm, making aggression or cruelty appear entertaining or acceptable. Over time, children may become less empathetic or more tolerant of harmful behaviours in real life, especially if they see others online reacting with humour, memes, or praise for violent characters or scenes.

Advice for Parents & Educators

LEARN WHAT CHILDREN ARE WATCHING

Take time to ask children what they're watching and who their favourite creators are. Sit down and watch a few videos to get a full understanding. This helps you spot inappropriate content early and shows children that you're interested and engaged in their online world, not just policing it.

TALK ABOUT WHAT'S APPROPRIATE

Keep communication open and non-judgemental. Talk about why certain themes or jokes are not appropriate for children, even if they appear in animated form. Help children understand that just because something is popular or shared widely, it does not mean it's suitable or safe. If they've seen something upsetting, respond calmly, offer reassurance, and explain things in an age-appropriate way.

USE PLATFORM SETTINGS WISELY

Make use of built-in safety tools like content filters, restricted mode, and age settings on platforms such as YouTube, Netflix or TikTok. Turn off auto-play where possible and regularly review what children are being recommended. Although these settings aren't foolproof, they add an important layer of protection and help reduce the risk of children encountering disturbing or adult content accidentally.

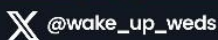
ENCOURAGE CRITICAL THINKING

Help children think carefully about what they watch. Talk about the difference between fictional exaggeration and reality, while helping them question why certain content is made. Is it informative, entertaining, or meant to shock? This builds digital resilience and encourages them to make safer choices in future, rather than simply following viral trends or peer pressure to watch mature content.

Meet Our Expert

Home to the world's largest CPD library for educators, The National College has transformed the way education establishments go about developing their workforces and managing compliance. We offer memberships and packages to help all phases and types of setting raise standards, save time, reduce risk, and build a culture of improvement.

See full reference list on our website



Users of this guide do so at their own discretion. No liability is entered into. Current as of the date of release: 25.02.2026



Community info/events

The Mayor of Hillingdon's Fundraising Chess Tournament

**Tuesday 31 March,
from 6pm to 10.30pm**

The Winston Churchill Theatre, Ruislip, HA4 7QL

The event is open to chess players of all abilities.
Finger buffet and refreshments provided.

Tickets £19.50 with all proceeds going
to The Mayor's Charitable Trust.



Scan the QR
Code to book.

[www.tickettailor.com/
events/mayorofhillingdons
charitabletrust/1920373](http://www.tickettailor.com/events/mayorofhillingdons-charitabletrust/1920373)



Repair and Reuse Day

In support of Repair Week 2026 (2 - 8 March), join us at our free community event to learn practical skills to repair your clothes, and get your bike or electricals fixed - helping you save money and reduce waste. You'll be able to explore a fantastic range of stalls, each one celebrating community, sustainability and keeping valuable items in use for longer. You can enjoy complimentary refreshments while taking part in our quiz and children's treasure hunt.



Repair and Reuse Day

**Saturday 7 March, 11am to 2pm
at The Great Barn, Manor Farm,
Bury Street, Ruislip, HA4 7SU**

A FREE event to learn practical skills to repair clothes, broken electricals or your bike – helping save money and reduce waste.

Find out more about zero waste refills, climate change and Harefield Hospital's scheme for recycling NHS mobility aids.

Have a go at our quiz and children's treasure hunt, enjoy refreshments and check out our pre-loved soft toy and book stalls too.

To find out more, visit

discover.hillingdon.gov.uk/repair-day



restart party



HILLINGDON
LONDON

www.hillingdon.gov.uk

M Kenny,
Headteacher.

